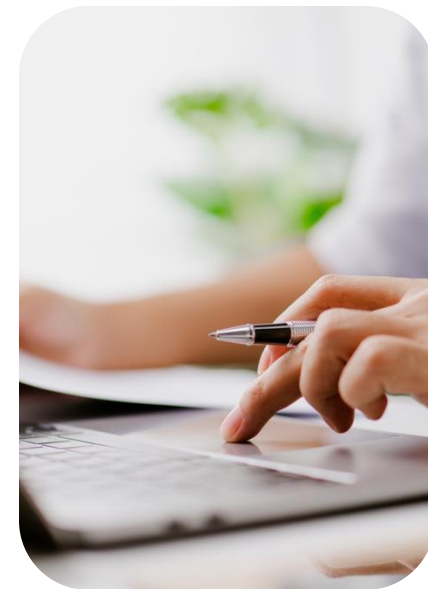


GPA's Standards of Evidence (SoE)

Presented by:

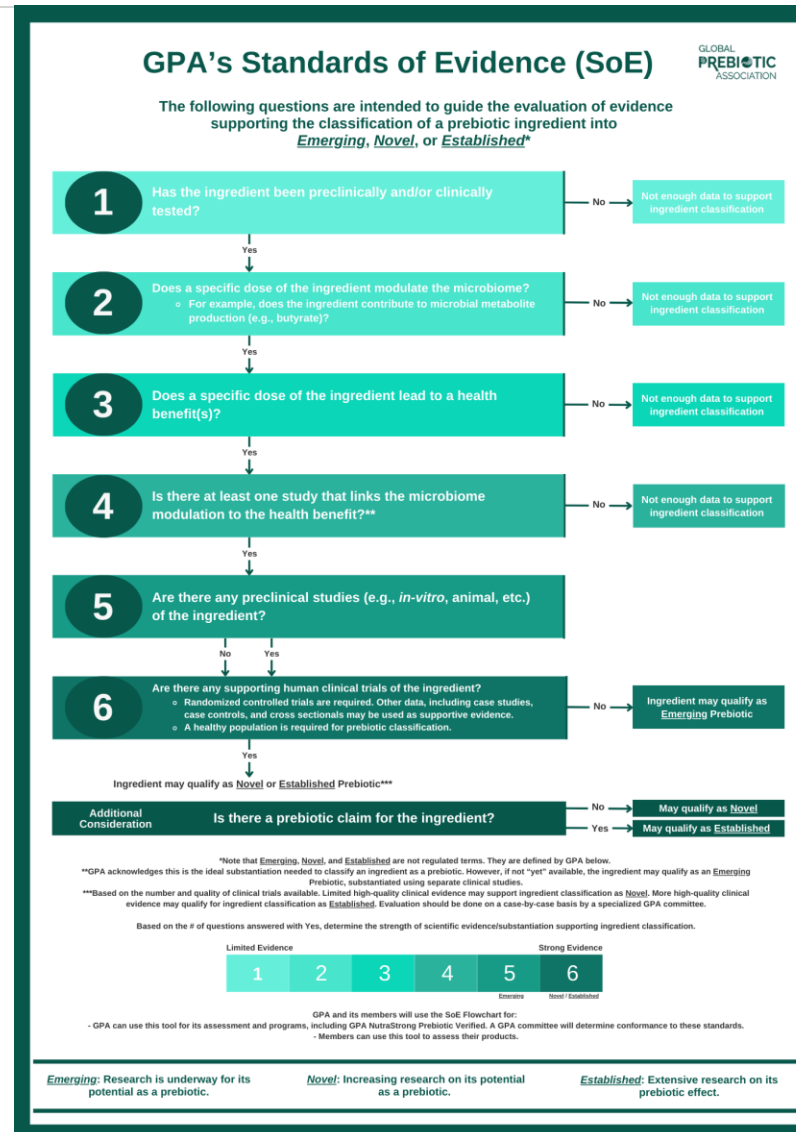
Paula Guerra, Ph.D.

Regulatory Affairs Manager at SGS Nutrasource



This Photo by Unknown Author is licensed under [CC BY-SA](#)

GPA's Standards of Evidence (SoE)



The Purpose

GPA's Standards of Evidence (SoE)

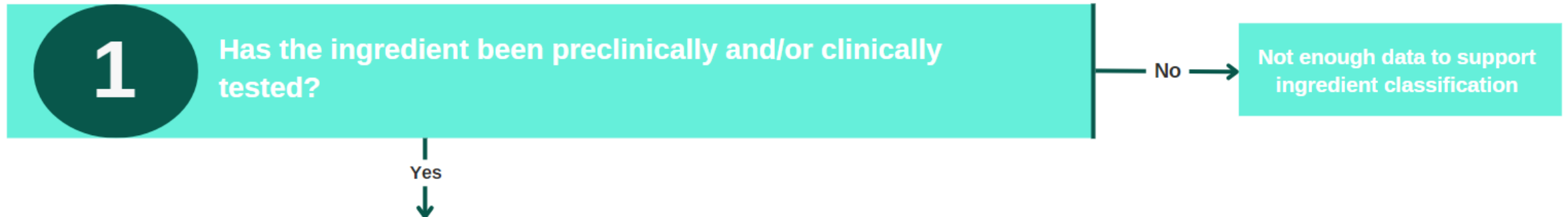


The following questions are intended to guide the evaluation of evidence supporting the classification of a prebiotic ingredient into Emerging, Novel, or Established*

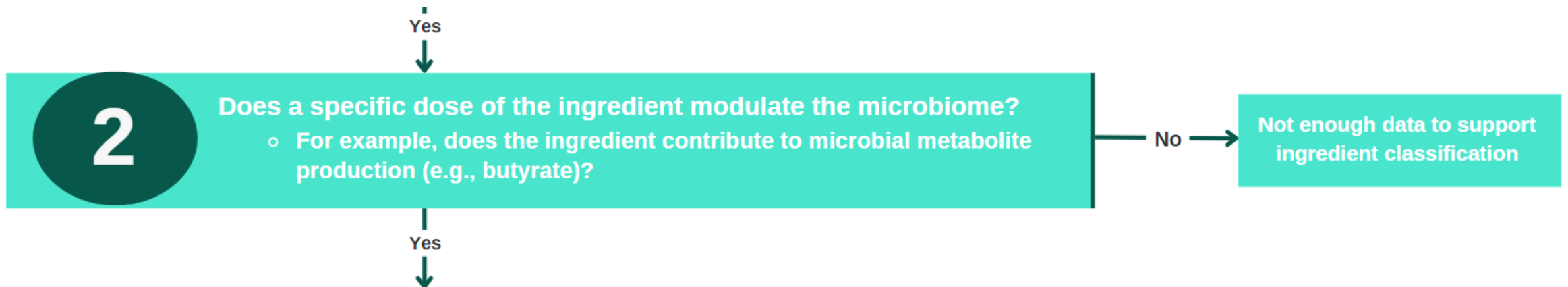
***Disclaimer:** Note that Emerging, Novel, and Established are not regulated terms. They are defined by GPA as:

- Emerging: Research is underway for its potential as a prebiotic.
- Novel: Increasing research on its potential as a prebiotic.
- Established: Extensive research on its prebiotic effect.

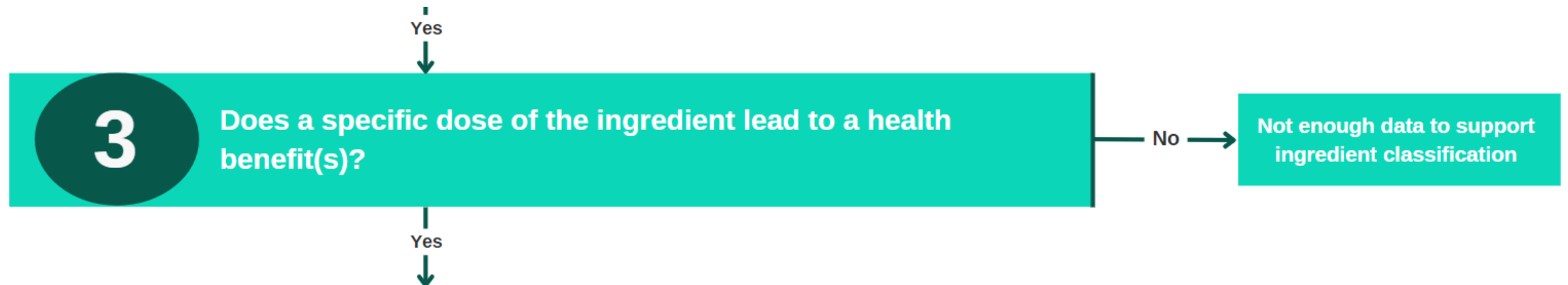
The Questions



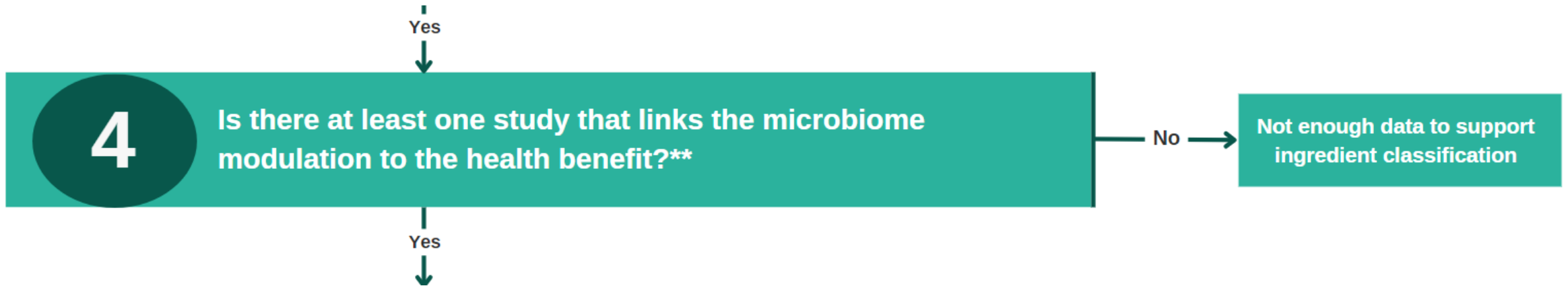
The Questions



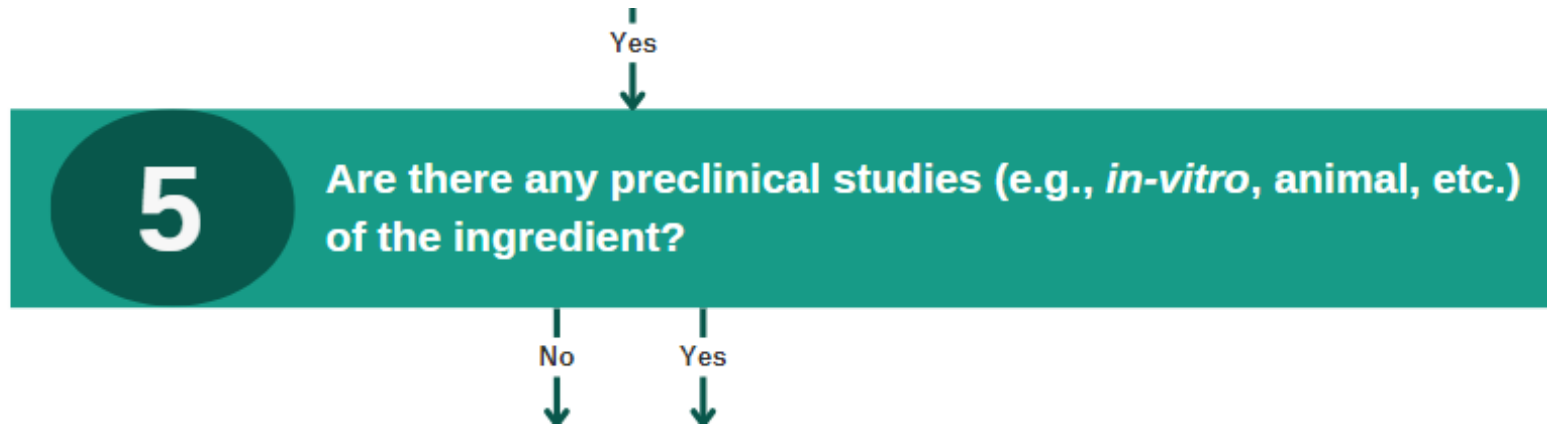
The Questions



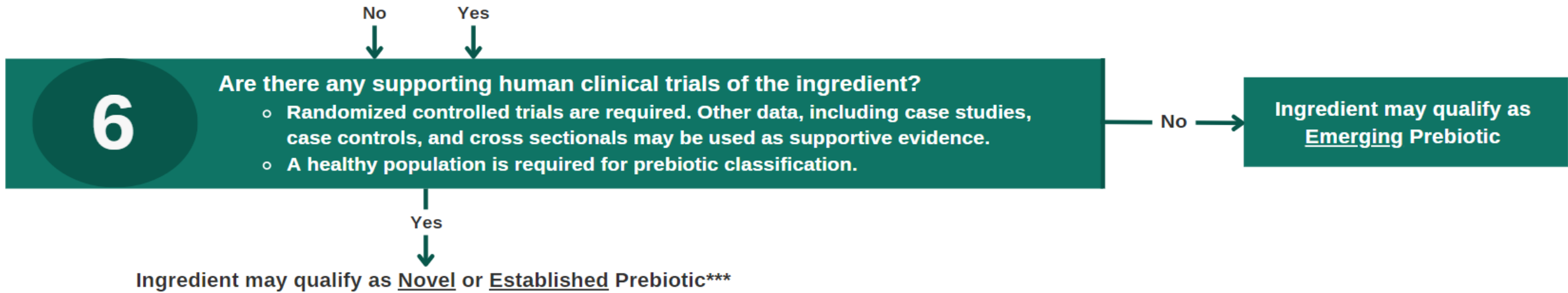
The Questions



The Questions



The Questions



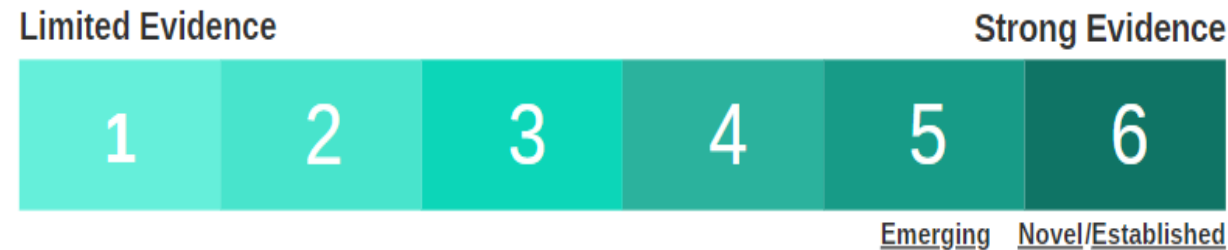
***Based on the number and quality of clinical trials available. Limited high-quality clinical evidence may support ingredient classification as Novel. More high-quality clinical evidence may qualify for ingredient classification as Established. Evaluation should be done on a case-by-case basis by a specialized GPA committee.

The Questions



The Evaluation

Based on the number of questions answered with Yes, determine the strength of scientific evidence/substantiation supporting ingredient classification.





SGS | nutrasource

GLOBAL
PREBIOTIC
ASSOCIATION

Thank you

Examples (Draft)

Established

- Inulin
- GOS
- FOS
- Acacia gum
- Resistant starch

Novel

- Resistant dextrin
- Polyphenols
- Omega-3 fatty acids

Emerging

- Amino acids
- Yeast hydrolysates
- Fungal glycans